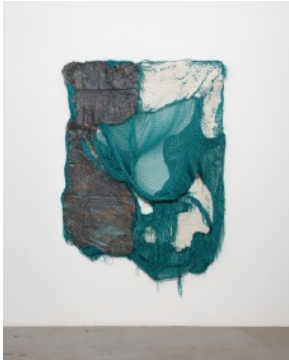




Randy Shull | *Black & White*
August 9 - September 14, 2024
Opening Reception, August 9, 6-8 PM



Tracey Morgan Gallery is pleased to present *Black & White*, an exhibition of new large-scale, abstract work by artist Randy Shull. This is Shull's third solo exhibition with the gallery. An opening reception for the Artist is scheduled for Friday, August 9 from 6-8PM.

Shull has the unique ability to evoke both gravity and weightlessness within a single artwork. His thick layers of paint take shape around the loose weave of handmade hammocks, a material which he has been incorporating in his work for several years and which he continues to explore and expand upon **with tireless experimentation.**

Structurally, the natural sagging and draping of the embedded hammocks, heavy from the weight of paint, lends a decidedly tapestry-like aesthetic - upon looking, we become suddenly aware of the weight of our bodies. **Simultaneously**, Shull's use of vibrant colors, earth tones, and rough surfaces and edges allow us to revel in the simple pleasures of materiality and light.

Hammocks are core to life in the Yucatán peninsula of Mexico, where Shull has lived part-time **for the past 18 years**, and where he maintains an art studio. As objects, hammocks are extremely strong and malleable, with a rich cultural history. **Shull at once honors this craft and lineage while treating it irreverently and** exploring the boundaries of what a painting can be - if art and hammocks are the vehicles of dreams, **Shull's work carves a path into the subconscious.**

The title of the exhibition is in part a nod toward contemporary life in the polarized U.S. and is in line with Shull's interest in pairs, contrasts, and the spaces between; many of the works on view are subtly divided into two panels.

In addition to the paintings, the exhibition will include some sculptural and video elements to illustrate Shull's investigation, in the extreme, of the capacity and capability of hammocks.

Randy Shull lives and works in Asheville, NC and Merida, Mexico. He received his BFA in Furniture Design from Rochester Institute of Technology, NY in 1986. He is the recipient of a North Carolina Arts Council Fellowship and a NEA Southern Arts Federation grant. He has exhibited both nationally and internationally and his work is included in the collections of The Brooklyn Museum, NY; The High Museum of Art, GA; The Renwick Museum of American Art, Washington, D.C.; The Mint Museum of Craft + Design, NC; Racine Museum of Art, WI; The Gregg Museum of Art & Design, NC; Museum of Art and Design, NY; Black Mountain College Museum, NC; The Asheville Art Museum, NC; The Ogden Museum of Southern Art, LA; The Mobile Museum of Art, AL, and numerous corporate collections including Fidelity, Wells Fargo, Piedmont Natural Gas, **Duke Hospital, and Wortham Center for the Performing Arts**, among others.

Above image:

Randy Shull, *Mayan Dream*, 2024, acrylic and metallic paint on woven hammock, mounted on panel, 68 x 50 inches
For image requests and press-related inquiries, contact China Langford: china@traceymorgangallery.com

TRACEY MORGAN GALLERY
22 LONDON ROAD ASHEVILLE NC 28803 828.505.7667 TRACEYMORGANGALLERY.COM